



CIRCOLO NAUTICO MARINA GENOVA

GENOVA, APRIL 28<sup>TH</sup> – MAY 1<sup>ST</sup> 2018

# 222 minisolo

## RACE INSTRUCTIONS

### CLASSES

Mini 6.50 prototypes / Mini 6.50 series

CON LA COLLABORAZIONE E IL SUPPORTO DI



MARINA GENOVA  
MARINA RESORT



CON IL PATROCINIO DI



Comune di Genova



Comune  
di Bergoggi



MINISTERO DELL'AMBIENTE  
E DELLA TUTELA DEL TERRITORIO E DEL MARE



SPONSOR



EDILIZIACROBATICA®  
Le soluzioni arrivano dall'alto

MARINA GENOVA  
MARINA RESORT

PHENOMIX

PARTNER TECNICI



## 1. RULES

The regatta will be governed by the rules as defined in the Racing Rules of Sailing (RRS 2017 – 2020). The prescriptions of the National Authority (FIV) will apply. The regatta, as per Mini 6,50 Class Rules, is considered as a category "C". Night Sailing: between sunset prescribed time and sunrise, the rules of WS part 2 will not apply, and the rules of IRCAS (COLREG) part B will be effective. If there is a conflict between languages, the Italian text will take precedence. All boats racing shall be equipped with a VHF transceiver able to operate on channels 9, 16, 69, 74.

## 2. NOTICE TO COMPETITORS

The Organizing Committee, the Protest Committee and the Race Committee, reserve the right to modify the programme, the Sailing Instructions and the Notice of Race. Change to the programme, notices to competitors, communications of the Protest Committee or of the Race Committee, will be signalled by hoisting code flag "L" on the signal mast and posted on the Official Notice Board, both situated nearby the Race Secretariat at the Circolo Nautico Marina Genova, within 09.00 a.m. of the day they become effective, except any change to the schedule of races which will be posted by 07.00 p.m. on the day before it will take effect. In addition, during the daily required radio communications, information regarding possible changes and shortening of the course will be provided.

## 3. SIGNALS MADE ASHORE

The main flag pole will be situated nearby the Circolo Nautico Marina Genova.

Code flag "L": a notice to competitors has been posted on the Official Notice Board.

**AP:** when H flag showing, it means 30 minutes or more for start

**AP over code flag "H":** boats shall remain in the port.

## 4. SCHEDULE OF RACES

From 25/04/2018 to 27/04/2018: equipments checks

Friday, April 27th                    ore 18.00 briefing

Friday, April 27th                    ore 20.00 welcoming dinner

Saturday, April 28th                ore 12.10 race start

Tuesday, May 1st                    ore 11.00 prize giving

Time and date of Prize Giving, may change according to the finish time of all Competitors.

## 5. CLASS FLAG

The Class Flag will be Marina Genova flag (white name of the Marina on a blue field).

## 6. COURSE

Genova/Pegli – Bergeggi – Giraglia – Capraia – Genova/Pegli, approx nm 222 (Appendix A).

Other courses chosen on the basis of the basis of marine meteo conditions, will be communicated to competitors before the start. The Race Committee boat will display the approximate compass bearing of offset mark.

## 7. MARKS

Start mark will be yellow cylindrical. Offset mark will be orange cylindrical.

## 8. THE START

The starting line will be placed in front of Genoa Pegli (Appendix B). If an offset mark is present, will be advised through the "D" flag on committee boat. The offset mark shall be left to port if the Race Committee boat displays a red flag, to starboard if the flag displayed is green. The

starting line will be between a staff displaying an orange flag on the Race Committee boat and the port-end yellow cylindrical mark. An orange cylindrical mark may be placed astern to the Race Committee vessel and it will be considered an integral part of the vessel itself (Rule 31 of 2017 – 2020 WS Rules). When a counter starter vessel is moored at the port-end of the starting line, it will be considered as an obstacle. Boats shall not sail between the counter start vessel and the port-end mark. The penalty will be DSQ.

## 9. STARTING PROCEDURE

Starting will be according to present WS Racing Rules in effect at the time. One start for both Classes (Prototype and Series).

All starting procedures will be also supported with acoustic advices and communicated on VHF Channel 69.

## 10. RECALLS

Boats eventually started in advance will be subject of individual recall by Race Committee on VHF channel 69. AT the same time the flag "X" will be hauled up. "X" flag will remain hauled-up until when the boats started in advance should have repeated a correct start, but in any case it will be hauled-down after 4 minutes from the official start time. According to rule 33.2 of federal regulations, a DSQ may be changed into a time penalty, according to a percentage decided from Race Committee (RRS rules 14, 64, e 44,3 modified and also rule 64.1 and related appendix A of RRS modified).

In case of a non definable numbers of boats started in advance, Race Committee will announce a general recall through the haul-up of first repeater flag, and the same time an advise will be given on VHF 69 channel. The new starting procedure will begin one minute after the haul-down of the first repeater flag.

## 11. CHANGE OF COURSE

In case of need the Race Committee may shorten the course or change the course.

Change of course at Giraglia: In case of adverse weather conditions, at the passage to the Isle of Giraglia the Race Committee may signal a change of course. Competitors shall sail directly to the finish line in Genoa/Pegli. This decision will be communicated according RRS WS 2017-2020 and by radio channel VHF 69.

## 12. FINISHING LINE

The finishing line in Genova/Pegli, will be between the white signal light of the top of break water (see appendix B), and the yellow mark to be left to port, lying at about 200m in SW direction from the white signal. In case of arrival at night, a white flashing light will be positioned on the yellow mark. Boats approaching the finishing line (when at least 2 mile away), shall communicate their sail number and name of the boat to the Race Committee on channel VHF 69.

## 13. SCORING

A mini 6.50 Prototypes scoring and a Mini 6.50 Serie scoring are foreseen, both in elapsed time.

## 14. TIME LIMIT

Time limit for both classes is fixed at 11.00 AM of 01.05.2018.

## 15. RADIO COMMUNICATIONS

Official VHF channel for all communications during the race is VHF channel 69.

No other radio communication (except VHF) is allowed.

The use of mobile phones is not permitted.

## 16. PROTESTS

Protest related to accidents or irregular course have to be presented within 2 hours from the arrival. In case of arrival after 6.00 PM this time limit is extended up to 09.30 AM of the following day.

Eventual equipment protests have to be presented before the race start, together with the pledge deposit of 400 Euro.

## 17. SAFETY REGULATIONS

The attention of Skipper shall be on the full conformity of the fundamental Rules, part 1 of WS 2017 – 2020, and particularly on:

Rule 1.1: HELPING THOSE IN DANGER «A boat or competitor shall give all possible help to any person or vessel in danger».

Rule 1.2: LIFE-SAVING EQUIPEMENT AND PERSONAL BUOYANCY «A boat shall carry adequate life-saving equipment [...] including one item ready for immediate use [...]. Each competitor is individually responsible for wearing personal buoyancy for the conditions.

Rule 4: DECISION TO RACE: «The responsibility for a boat's decision to participate in a race or the continue racing is hers alone».

A boat that retires shall notify the Race Director or the Race Committee, as soon as possible. During the entire race is mandatory for Competitors to be tuned on frequency VHF 69. The obligatory daily communications will be four: at 6.00 a.m 12 p.m 18 p.m 12 a.m. Failing to comply with these communications will be subject to a penalty by the Protest Committee (point 12 and 17.4 of these Instructions). At the time of passing the Isola della Giraglia, Competitors shall inform the Race Committee of their passage. Competitors shall keep a logbook, which may be requested by the Race Committee, the Protest Committee, or the Maritime Authorities. This logbook, shall contain all the information regarding the navigation, the time of the passage of the various island and, if possible, the sail number of the boats preceding an following.

## 18. CALLS AT PORTS AND ABANDONS

Competitors are authorized to call at any port at any time. Competitors shall inform the Race Committee of their arrival at the port. Boats abandoning the race, for safety reasons, shall inform at the first possible time by radio (on channel 16 and/or 69 VHF the escorting vessels), and also to the Race Committee Mob. 0039 340 3384428.

## 19. TRACKING

The Organization (cost and installation provided by the Organization) will place on board of all boats special radio detectors for a service of "Tracking Online", in compliance with Privacy Law as by Art 20 of Law n° 675/96, which allows transferring data to Circolo Nautico Marina Genova, to be used only for sending information and safety.

As these apparatus are used for safety reasons, tampering with the apparatus placed on board the boats for the "Tracking Online" may bring to penalties or disqualification by the Protest Committee.

## 20. ADVERTISEMENT

Boats may display advertising stickers with the name of the sponsor.

## 21. LICENCES

All competitors must comply with the Rules concerning Sailing Licences provided by their National Authority.

## 22. COMMITTEES

The complete list of the members of all Committees will be posted on the Official Notice Board before the start of the race. In case of appeal the Italian Sailing Federation (FIV) will be competent.

## 23. DISCLAIMER OF LIABILITY

Competitors participate in the regatta entirely at their own risk. According to WS in effect at the time.

The Organizing authority will not accept any liability for material damage or personal injury or death sustained in conjunction with or prior to, during, or after the regatta.

## 24. PRIZES

Prizes will be awarded to the three top Yachts scored for Mini 6.50 Prototypes and the three top scored for Mini 6.50 Series.



CIRCOLO NAUTICO MARINA GENOVA

**Circolo Nautico Marina Genova**

Via Cibrario 47 - 16154 Genova

Tel +39 348 3964330 / +39 340 338 4428

www.circolonauticomga.it

info@circolonauticomga.it



**Lega Navale Italiana**

**Sez. Genova Sestri Ponente**

Via Pionieri e Aviatori d'Italia 89

16154 Genova



**Classe Mini 6.50 Italia**

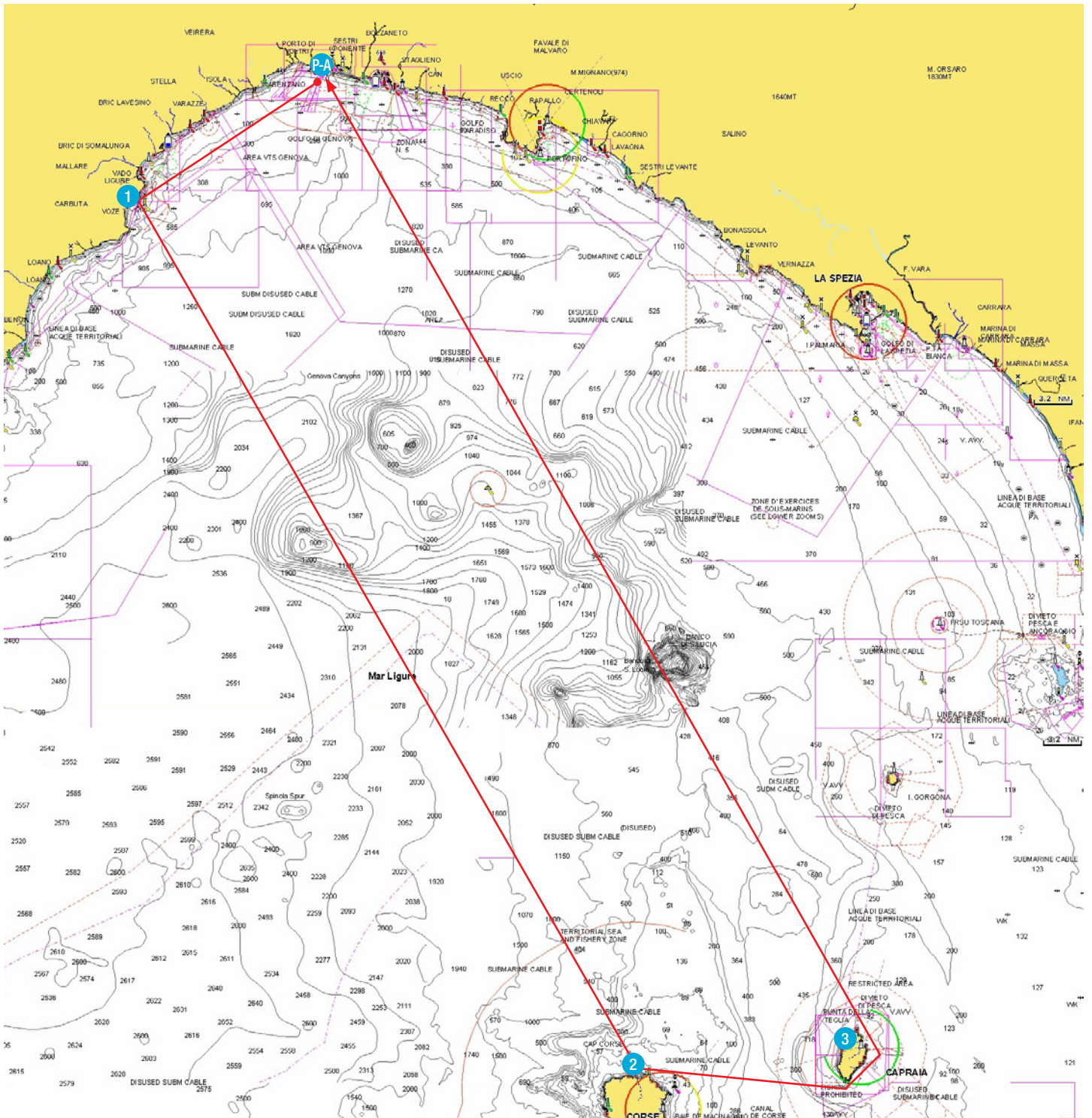
Scuola di Mare Beppe Croce

Porticciolo Duca degli Abruzzi - 16128 Genova

www.classemini.it - info@classemini.it

# APPENDIX A

## COURSE



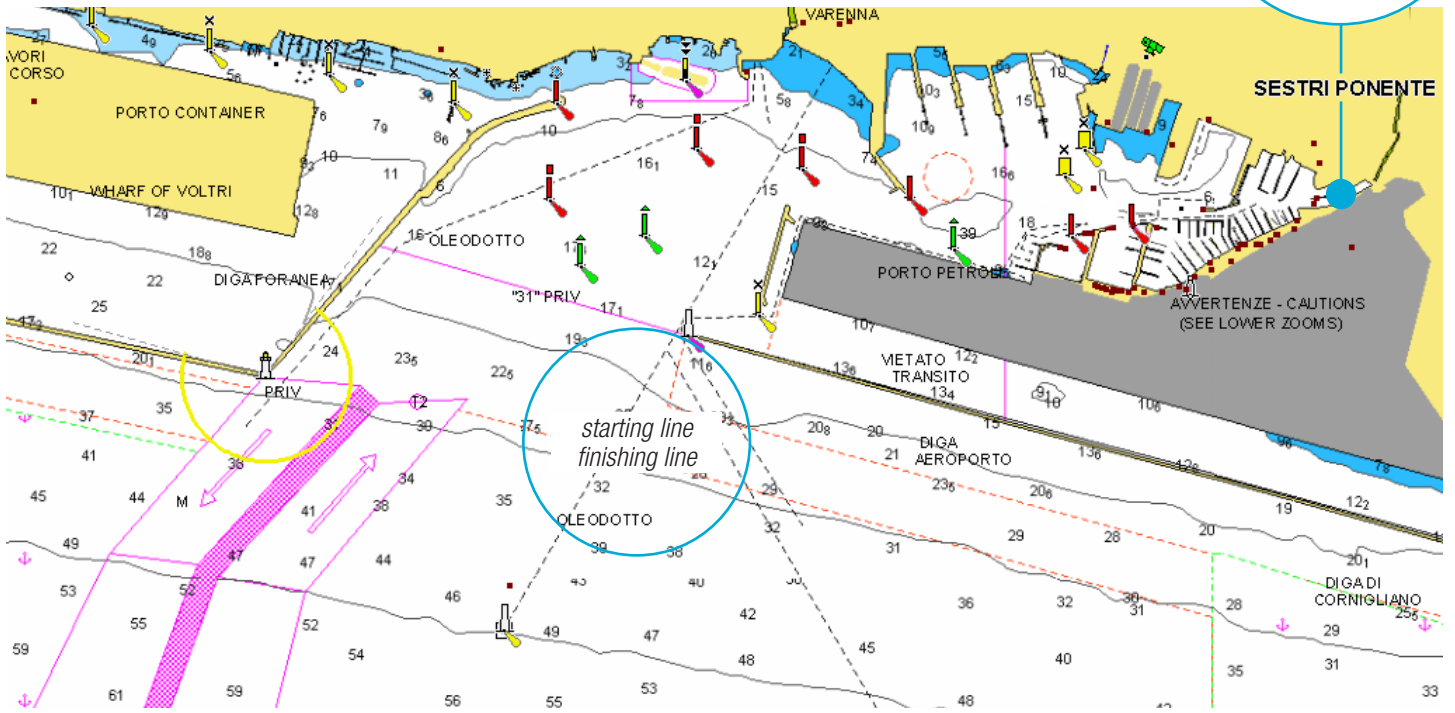
P Genova/Pegli – ① Bergeggi – ② Giraglia – ③ Capraia – A Genova/Pegli.

- ① Bergeggi island to be left to port
- ② Giraglia island to be left to port
- ③ Capraia island to be left to port

# APPENDIX B



## STARTING LINE



## FINISHING LINE

The finishing line in Genova/Pegli, will be between the white signal light of the top of breakwater, west side port of Genovac ( $44^{\circ}24'800\text{ N} - 08^{\circ}49'020\text{ E}$ ), and the yellow mark to be left to port.

